

### English

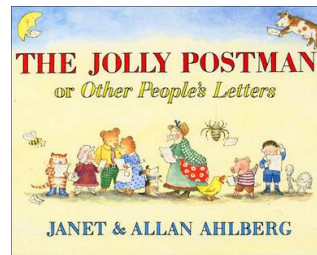
All of our writing will be based around the Jolly Postman, his village and the characters in his book. We will start with information reports and compare the fictional wolf with those in non-fiction texts. We will also write some explanation texts about how to cross the road safely, to keep everyone safe in the Fairytale village.

### Maths

As well as continuing to work on our number skills, we will be looking at shape and measures this half term and learning to tell the time. We will keep working on our maths challenges applying our understanding and using our maths meetings to practise number bonds, times tables, mental addition and subtraction and our verbal reasoning skills.

### Geography & History

The Jolly Postman topic is led by a geography unit all about our own village. We will explore different maps and work on directional vocabulary, as well as taking walks around the village (whatever the weather!) to look at its physical and human features. We will compare our village with the fictional one of the Postman and with the Andover, to find any similarities and differences. We will also use our village and photos we take, as inspiration for our art which will be creating landscape paintings and pictures.



Our topic this half term will be 'The Jolly Postman'.

Computing  
testing games  
and simple  
algorithms

D&T  
Making and  
designing festive  
Biscuits.

### PE

Mr Holmes will continue to work with the children Every Wednesday, continuing to develop our ball skills and using these to play a variety of games such as football, cricket and catching games. We will also be having dance every Monday being led by PH Sports supported by myself and Mrs Gibbins.  
**Please make sure that children have a named PE kit (indoor and outdoor) in school every day, with water bottles containing water.**

### R.E

Concept: Light as a symbol  
Hanukah, Advent and the Christian nativity

### Science

We will continue our on-going observation of the effect of the weather on our Grateley tree and the changes that occur. Alongside this we will continue with our science topic on materials and will begin to think about how the properties make materials useful for different purposes. We will investigate simple problems such as which materials would make Teddy a good house and what should the Postman's sack be made of.

### Music

Peripatetic music teaching lead by Hampshire Music Service. This will culminate with a performance near the end of term!

### Homework

Children will continue to bring reading books home each day - please take the time to read a little with your child every day.

I will continue with spellings which will be utilised throughout the week in a variety of phonics and handwriting activities.