

Grateley Primary School



...a School where every child becomes a lifelong learner and
realises their potential.

Welcome to Grateley Primary School

Prospectus 2022 - 2023



This prospectus has been put together to help you gain an understanding of how we are organised and to appreciate the exciting learning opportunities available to help your child during their time with us. Every school is different and we believe that we are unique for the caring, family atmosphere we engender whilst challenging our children to realise their potential.

At our most recent Ofsted inspection in May 2018 it was highlighted that *'pupils' work and the school's own assessment information indicate that most current pupils are making good progress across a range of subjects, including English and maths. This is because teaching is well planned and the assessment of pupils' progress is more accurate.'* We continue to focus upon this and endeavour to provide consistently high standards of teaching. Additionally, it commented on a *'curriculum that is suitably broad and balanced'* and children who demonstrate a *'positive attitude to learning and are polite and courteous to each other and adults'*.

I was appointed Head teacher in September 2017 and enjoy working with the brilliant staff and governing body to ensure that Grateley continues to have the capacity to improve further; building upon the achievements of previous years.

I am extremely proud to be leading a school such as Grateley. The best way to find out about our school is to come and visit, to see us in action and to meet our children and staff. A telephone call or email to the school office, 01264 240889 or adminoffice@grateley.sch.hants.uk, is all that is needed to arrange this.

We look forward to welcoming you to our school, and to a happy and successful partnership with all our new children and families.

A handwritten signature in cursive script that reads "REDance".

Rachel Dance
Head Teacher

A handwritten signature in cursive script that reads "ABridges".

Amelia Bridges
Chair of Governors

1. Keeping our children Safe is our Priority

- We are vigilant about our children's physical and emotional safety.
- We prioritise safeguarding in all aspects of school life.
- We monitor and report on safeguarding.
- We teach our children what it is to be safe, now and in the future.

2. We provide Effective Leadership and Management

- We strategically plan future requirements and enhancements to ensure affordability and longevity of the School.
- We maintain close collaboration with local Authority and Government agencies. We manage our School and its resources efficiently and effectively to create a safe and stimulating learning environment.
- We promote and encourage high quality training to enhance teaching and learning, challenging our teachers to continuously improve.
- We build relationship and work in partnership with our stakeholders to ensure support within the community.
- We self-evaluate our overall performance regularly through the Strategy and School Improvement Plan.

3. We deliver excellence in Teaching, Learning and Assessment.

- We provide the highest possible standard of a personalised education through a broad and balanced curriculum.
- We share good and outstanding practise and work to raise the quality of teaching to consistently outstanding.
- We identify and overcome barriers to learning so that every child is able to achieve their very best.
- We build strong relationships with other schools in the area to enhance our own practise.

Ethos

Grateley Primary School Strategy

...where every child becomes a lifelong learner.



4. We Ensure High Standards of personal development, Behaviour and Welfare

- We promote Spiritual, Moral, Social & Cultural (SMSC) experiences to enable our children to think deeply, be happy, caring, fair, polite, articulate, independent, responsible and confident citizens of the world.
- We respect all children and teach them to appreciate difference and celebrate cultural and religious diversity.
- We promote and encourage a healthy lifestyle, so children remain physically and mentally well.
- We foster a caring, respectful attitude towards others.
- We promote a corporate responsibility to caring for our world and we aim to respond to the ever changing needs of our environment.
- We nurture Fundamental British Values by respecting all.

5. We focus on Outcomes for our Children

- We monitor progress, achievement and attainment of all children in writing, reading and maths.
- We provide variety and depth of learning within the school day, and through extra-curricular learning activities.
- We ensure our children's learning is relevant to the world that they live in and supports their development and allows independent formulation of ideas and opinions.
- We are committed to the education and development of all our pupils, to enable each one of them to realise their potential and achieve their very best.

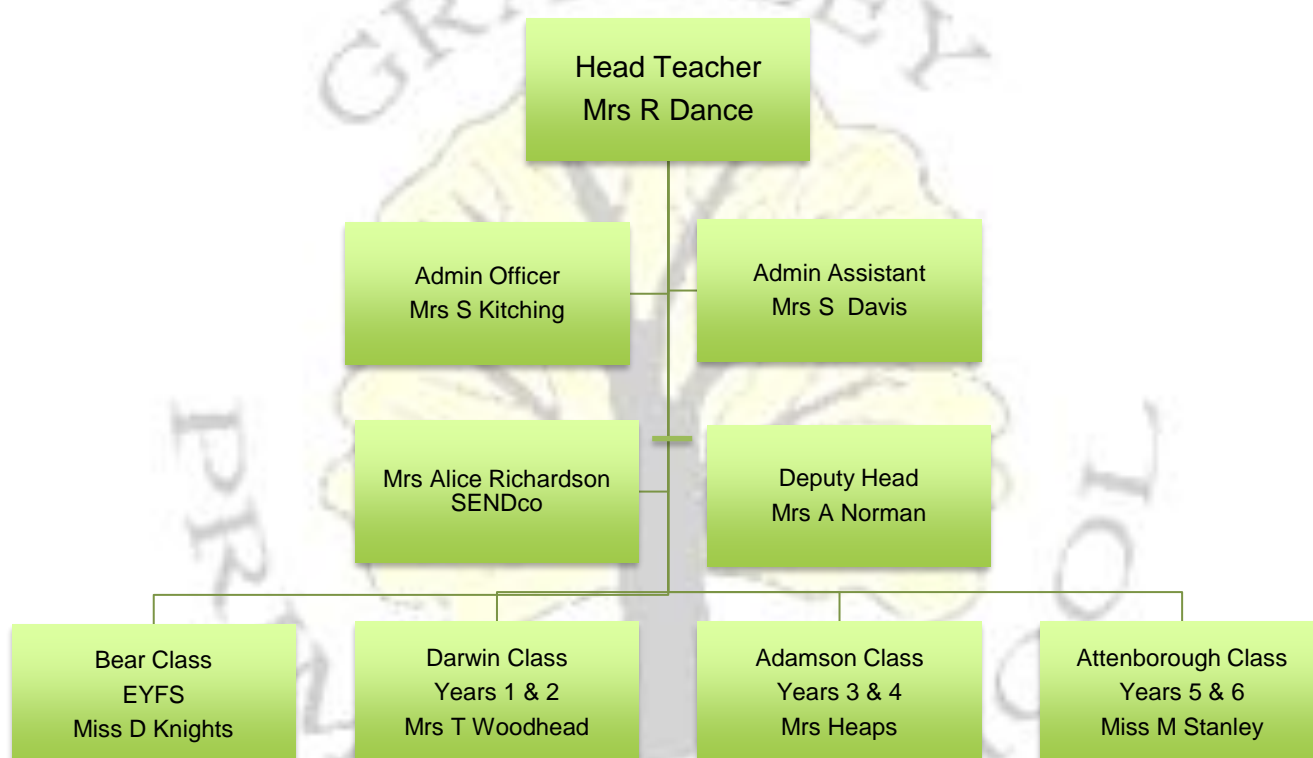
About our School

We are a non-denominational, co-educational county primary school maintained by Hampshire County Council. The oldest part of the building dates back to 1836 and is unique in that it is the only school in Hampshire to be built in cob. There have been a number of extensions over the centuries, the most recent being our school hall and kitchen in 2005.

As well as our main site, the school field is a short walk away which includes playing field and wildlife pond and nature area. We take every opportunity to continue our learning in the outdoors.

Organisation

We are a two-year group school, with the exception of our Early Years Foundation Stage (EYFS) class, and are organised as shown below:



Our Key Stage 1 and 2 classes are supported by teaching assistants and our Head Teacher also teaches routinely.

The new Head teacher has a clear and thorough understanding of the school's strengths. She has quickly identified areas for school improvement and set about addressing these tenaciously. She is determined to make the school the best it can be.
Ofsted May 2018

*"People are kind at Grateley School."
Georgia, Darwin Class*



Our School Community

We welcome parents and carers into Grateley Primary School believing we are partners in the education of your children. There are many opportunities for parents to become involved in the life of the school and to gain a greater understanding of its work. Parents' support and expertise can be used in many ways and is greatly valued. Police checks and DBS checks are carried out on all adults working in school, including regular volunteers. If you are able to help, please talk to your child's teacher.

Communication with Parents

We communicate with parents and carers in various ways, for example through Parentmail, our fortnightly newsletters, questionnaires, workshops and informal social events. Parents are regularly invited to assemblies and to Parents' Evenings each term. Grateley staff are always happy to meet with parents and carers to talk through any concerns.

The school has a Home School Agreement to support the partnership between home and school, and foster shared dialogue.

To enhance our home school communication even further, the School website has a wealth of information including our newsletters, class pages, copies of key policies and curriculum information.

Parents Teacher Association

Our PTA exists to support the life and work of the School and is open to all members of the school community.

The Association provides invaluable support to the school through organising many social and fundraising events involving parents and the wider local community. Money raised provides extra facilities and equipment for the pupils. The group

holds regular meetings. The PTA identifies long and short-term projects for its fundraising; which enables us to buy 'special' extras to enhance pupils' school experience. Their hard work has enabled us to purchase two interactive panels for two of the classes as well as put money towards a new outdoor science area.

The PTA needs the support of parents to ensure it is able to continue to enrich the lives of children. As a new member of our school community we hope you will be able to add your support to the work of the Association.

The Governing Body

The Governing Body of the school is made up of people from a variety of backgrounds. The school governors are a group of individuals, who are elected, nominated or co-opted and are representative of parents and staff, the Local Authority and the local community. School Governors work with the Head teacher and are responsible for setting the strategic direction of the school. Meetings are held at least once each term and committees meet in addition to meetings of the full Governing Body.

Parents' and carers are extremely positive about the school. 'A caring environment with a warm approach to every child. I would strongly recommend this school to other parents' is just one of many similar comments received during the inspection.

Ofsted May 2018

Governors know the school well and carefully monitor the effectiveness of leaders. They ask challenging questions and hold leaders to account for pupil's progress and outcomes.

Ofsted May 2018

Joining the School

Admission Arrangements

Every effort is made to make a place available for your child in our school. However, schools have a limit on the number of children they can take. Grateley Primary School has a PAN (Pupil Admission Number) of 15 in each year group. This figure is set by the Local Authority (LA) and agreed with Governors and Head teacher. If the number of children wanting a place is below the set figure, your child will be offered a place. There may, however, come a point when there are too many children of that year group for them all to be given a place. If a place is not available on application, you have the right to appeal to Hampshire County Council Education Authority. Appeals are heard by an independent panel. A Guide to Admission Appeals can be obtained from the Admissions Team via the County Council website: www.hants.gov.uk.

Administration of admission arrangements to County Primary Schools is dealt with centrally by Hampshire County Council. Applications are available from the County Council Admissions Team. Completed forms, or online admissions must be returned to the School Admission Team or first preference school by the submission date in the Autumn Term prior to starting. Parents and carers of children seeking to join the school in other years, should in the first instance contact the In-year Admissions Team of the County Council. Grateley Primary School welcomes all children regardless of special needs or disability. Pupils with additional needs may have extra visits before starting school and there will be close liaison with parents to ensure that the correct arrangements are in place.

Starting School for the First Time

Starting school is a very important time for you, your child and the school. We all need to work together to make the transition smooth and rewarding.

In the term prior to their entry, pupils are invited into school for visits. This helps them become familiar with the surroundings and routines of school. During this period, there are meetings for parents to discuss our partnership with you and talk about any concerns you might have.

Pupils will be admitted to Grateley Primary School in the September of the academic year in which they are five. The Early Years Curriculum is grounded in active learning. Through practical activities, purposeful play and talk, pupils develop an understanding of the world and the basic concepts they will need for their later learning. Parents can play a major role in fostering good attitudes to learning, developing language skills and promoting good behaviour.

Every child deserves the best possible start in life and the support that enables them to fulfil their potential. Children develop quickly in the early years and a child's experiences between birth and age five have a major impact on their future life chances. A secure, safe and happy childhood is important in its own right. Good parenting and high quality early learning together provide the foundation children need to make the most of their abilities and talents as they grow up.

The Early Years Foundation Stage (EYFS) sets the standards that all Early Years' providers must meet to ensure that children learn and develop well and are kept healthy and safe. It promotes teaching and learning to ensure children's 'school readiness' and gives children the broad range of knowledge and skills that provide the right foundation for good future progress through school and life.

At Grateley Primary School we value the potential of home-school links and make every effort to involve parents in the learning and development of their child.

Joining the School Later On

Sometimes children join the school later on in their school life. We make every effort to ensure they are welcomed, looked after, and monitored so that they quickly make friends and can find their way around the school. Teachers give children time to settle in before making an assessment of their academic abilities. This assessment, together with records from their previous school, enables children to have the best start in our school.

The number of service-family children attending the school has risen sharply over the past two years. These pupils are quickly integrated into classes and settle well. As a result, most make good progress and attain well.

Ofsted May 2018

Moving On – Transferring to Secondary School

At the end of primary school, children transfer to a secondary school. Our children move to a number of different schools in Hampshire, Wiltshire and sometimes further afield. Additionally, some children move part way through the school year. In all cases we support the process by facilitating visits to the new school where practical, and providing comprehensive reports on children's progress and achievements.

Our Curriculum

The curriculum is suitably broad and balanced. Pupils enjoy learning a range of subjects and participate well in all areas. The creative cross-subject links made in topic work, hook pupils' interest.

Ofsted May 2018

We want all our children to experience success and enjoy their learning whilst at school. We aim to achieve this through high standards of learning and teaching within a happy, structured and caring environment. The skills of true thinking (reasoning, creativity, judgement and memorisation) allow individuals to grow intellectually. Our children are given the chance to perform these mental operations at an appropriate level for their development, in accordance with the Primary Curriculum.

Teaching methods, ranging from whole class to individual personalised programmes of study, are chosen as appropriate to meet the task or skill being focused upon. During the course of the year, the children will encounter a range of teaching methods. Our curriculum strives to ensure breadth and balance so we often do not work within the parameters of separate subjects for all of the school day. In fact, children learn faster and more effectively when skills and concepts are linked between subjects at the same time.

We plan topics carefully so continuity and progression are smooth and aid development. Topics enable us to identify skills, concepts, knowledge and ideas from individual subjects and bring them together in a cohesive way.

Home learning (as we prefer to call it instead of homework)

Learning at home can help develop a child's self-discipline and promote a motivating attitude towards study and learning. Our aim is to work in partnership with parents and provide an effective home learning system that enables all our learners to either consolidate or extend their learning at home. We consider it important for home learning tasks to be purposeful and matched to the ability of the individual children and as a result, in accordance with Government guidelines, each year group follows a home learning timetable appropriate to the age of the child.

Subject Statement

English

We use English to communicate in both written and spoken form. We use language to build our view and opinion of the world and our community. We continue to learn, develop and enhance our knowledge and understanding of English throughout our lives. It is taught daily with work appropriately differentiated to match all abilities.

With parental support, we want our children to:

- speak clearly and confidently in any situation,
- listen actively and respond appropriately, developing knowledge and opinion,
- read fluently for both pleasure and information,
- write clearly and with confidence in any given genre,
- use spelling rules, phonics and grammar accurately,
- be able to proof read their work and make amendments and improvements.



Mathematics

We aim to provide our children with a wide mathematical education taught in an enjoyable, relevant and creative way. We use 'real life' experiences so children begin to understand the importance of applying maths skills in order to solve problems and engage them for future learning. Maths is taught daily. Children move through EYFS, Key Stage 1 to Key Stage 2 building on existing skills and developing their knowledge and understanding. Pupils explore all four numbers operations and are encouraged to try different strategies that best suit their learning. Pupils explore shape and space and develop their measuring skills in a range of contexts. They are given lots of opportunity to discuss their methods and encouraged to use the appropriate mathematical vocabulary. We want our children to know and understand mathematical concepts, skills, facts, relationships and strategies and be able to apply and communicate these in a confident way.



Science

Every child has a natural curiosity about the way the world works. Science at our School enables your child to find out how they can get answers to questions such as what size blades make the best helicopter, or why the sun seems to move across the sky or can a bean seed grow upside down? Science is a systematic investigation of the physical, chemical and biological aspects of the world, which relies on first hand experiences and on other sources of information. The scientific process and problem solving activities will be used to deepen your child's understanding of the concepts involved. At our School we aim to develop pupils' enjoyment and interest in science and an appreciation of its contribution to all aspects of everyday life. We build upon pupils' curiosity and sense of awe of the natural world through the use of a planned range of investigations and practical activities.

Religious Education

RE is taught, as required, from the Hampshire Agreed Syllabus 'Living Difference'. Parents' wishes concerning both religious education and worship are met, as specified in the 1988 Education Act, and children may be withdrawn on religious grounds at parental request. RE lessons offer a chance for children to explore beliefs and practices of 4 major world faiths, Christianity, Judaism, Hinduism and Islam. Visits to places of worship, handling artefacts and visits from practising members of different faiths enhance children's understanding of our multicultural society. Children consider the influence of the teachings of different faiths on their followers as well as responding to the big questions of life from their individual viewpoint. They learn to value beliefs of all children while developing their understanding, tolerance and respect for the beliefs of others.

Foundation subjects

Geography

We want the children to develop their knowledge of people and places and to understand the physical, social and economic forces which shape those places and the lifestyles of the people who live there. Our geographical studies cover local areas/issues and extend to the wider world. The children learn to use maps to locate cities, countries, mountain ranges, rivers, seas and oceans. They use atlases, photos and the internet to explore the environment and economics of those countries. They then use the skills they have developed in literacy, numeracy and IT to report and record their findings.

History

History is taught mainly through a topic based approach and gives the children a chance to explore a wide range of sources from which the past may come alive. History allows our children to compare and contrast, to examine how and why things have changed, to learn about historical characters and expand their research skills. We want our children to be open-minded and enquiring thinkers, understanding cause and effect. We want them to understand how people have lived in the past and begin to make links between the past and modern times. We encourage first-hand experience wherever possible and field work visits and in-school workshops play an important role in all year groups.

Computing

Our children need to learn how to manage it all – to get hold of information, evaluate its suitability, store it, share it with others and tailor it to meet their own needs. That's where their Computing lessons come in! The children learn how to safely navigate the internet and communicate through emails, develop digital photography skills, use sound and video recording equipment and access a wide variety of software. Newly installed teaching panels throughout the school, along with digital microscopes, sensor equipment, digital cameras and voice recorders, to name but a few available resources, ensure that computing can be used as a learning tool throughout the curriculum. We aspire for our children to confidently and independently use and apply information technology skills to support and extend their learning. We hope to develop a culture where the use of computing becomes second nature to our pupils, thus ensuring they are ready and able to embrace the technological advances in their futures.

Music

Music at our school is rich, varied, creative and exciting. We participate with the County Music Service, 'The Giant Sing' in March. Other music lessons are available, for a fee, provided by members of the County Peripatetic Staff. We encourage our children to take part in local events outside of school and also invite professional singers and musicians from a variety of cultures to perform and work with the children in school. Our children sing and perform during Christmas and Easter whole school concerts and productions.

Design Technology

Design technology helps children to become problem solvers through practical tasks, using creativity and imagination. Children take every day or familiar objects and investigate how they actually work and who they are really aimed at. Working with a variety of materials and through the new skills they learn, children get to design, make and evaluate a range of products from picture frames to hats, torches to musical instruments. Design technology is a subject all children can enjoy individually or as part of a team and gives them the opportunity to become innovators.

Arts

Art, craft and design stimulates creativity and imagination. We provide a rich environment in which we encourage our children to communicate through the use of colour, texture, form, pattern and materials. We use the local environment to stimulate ideas and start some aspects of our art work. Art gives children a lot to look forward to! Investigating lines, shapes, colours and textures help our children with the basics and enable other work such as 3D and printing to develop. We try to inspire our children in art by using the skills and talents of professional artists to work alongside us.



Other Languages

Learning a foreign language provides a valuable educational, social and cultural experience in preparation for future life. At Grateley, we aim to introduce our pupils to other languages, specifically French, in a fun and enjoyable way. Interesting and relevant topics are chosen in order to engage and stimulate learning and develop children's curiosity of language.

Sports and games

We are very lucky to have a sports coach who plans and organises the sports curriculum (including after school clubs) to suit a variety of children's needs and interests in sport. We participate in local games and as a school in many local and inter county events. Our children are healthy and happy when participating in sports and games. We were recently awarded the Youth sports Trust Recognition for Sport award and have also been awarded the Silver Sports Mark three years in a row.



Personal Development Education – PDL

We aim to promote healthy, independent and responsible members of society. We encourage our pupils to play a positive role in contributing to school life and the wider community in accordance with the New Primary Curriculum and our Values Education. We follow guidelines so our children are given opportunities in P.D.L. lessons to develop confidence, self-motivation and an understanding of their rights and responsibilities within our diverse society. The P.D.L. curriculum is taught in a variety of ways: through other subjects such as English or History, as part of RE, through 'circle times', through Science topics and through outdoor educational visits and activities.

Clubs and extra-curricular activities

We provide a wide range of activities that our children can participate in at lunchtime and after-school. Children who attend after-school clubs need to obtain written permission from parents by completing a club letter from school. Many of our clubs are led by staff within school including sport, maths, choir, art, cooking and gardening.

Outdoor education and residential visits

The outdoor classroom can be used to bring learning alive for many children and we aim where possible to inspire and stimulate our children. We also aim to utilise the local surrounding community and to link with local churches, businesses and residents to enhance the curriculum.

Residential visits are a great way of building self-confidence as well as allowing children to develop teamwork, friendships and increasing independence as well as enjoying the outdoors!



Early Years Foundation

"I like learning
about
numbers."
Spencer,
Bear Class

Transition from Playgroup settings to EYFS

Moving from playgroup settings to primary school can create anxieties for some children and we understand that this can be a difficult adjustment. Liaison with playgroups and play-settings is a crucial factor which enables us to 'get to know' our new children before they arrive. In partnership with these groups, we provide opportunities in the Summer Term for pre-school children to visit our school and meet their teachers.

Inclusion and Equality

Equality

We believe that all pupils and members of staff should have the opportunity to fulfil their potential whatever their background, identity and circumstance. We are committed to creating a community that recognises and celebrates difference within a culture of respect and cooperation. We appreciate that a culture which promotes equality in relation to all protected characteristics (age, disability, gender reassignment, marriage or civil partnership, pregnancy and maternity, race, religion or belief, sex and sexual orientation) will create a positive environment and a shared sense of belonging for all who work, learn and use the services of our school. Our commitment to equality and diversity is a fundamental part of our drive towards excellence. We recognise that equality will only be achieved by the whole school community working together – our learners, staff, governors and parents in particular.

Safeguarding

Safeguarding is effective. All staff and governors have received the latest training. Pupils say that they feel safe at school.
Ofsted May 2018

Grateley Primary School is committed to safeguarding and promoting the welfare of children and expects all staff and volunteers to share this commitment. This means that we have a Safeguarding and Child Protection Policy and procedures in place. All staff, including supply staff, volunteers and governors, must ensure that they are aware of these procedures. Parents and carers are welcome to read the policies on request. Sometimes we may need to share information and work in partnership with other agencies when there are concerns about a child's welfare. We will ensure that our concerns about our pupils are discussed with his/her parents/carers first unless we have reason to believe that such a move would be contrary to the child's welfare.

Key Personnel:

Designated Safeguard Lead (DSL) -Mrs Rachel Dance

Deputy Safeguard Lead – Mrs T Woodhead/Miss Donna Knights

Safeguarding Governor: Mrs Victoria Rutherford

Chair of Governors: Mrs Amelia Bridges

Behaviour

We expect outstanding behaviour from all our children, enabling them to be safe and happy whilst at school. Self-discipline and respect for all is our ultimate aim and it is hoped that children will learn to respect each other and show tolerance to all within our school community. Good and outstanding behaviour is promoted on a daily basis through our positive behaviour policy which has been agreed school-wide by the School Council and staff. The policy seeks to reinforce the principles of behaviour that create a happy, caring, friendly school environment where all feel valued.

Pupils behave well and react quickly to prompts from adults. They demonstrate positive attitudes to learning and say that they enjoy coming to school because teachers make lessons fun.

Ofsted 2018

Catering for the Needs of All



At Grateley, we work hard to ensure that every child becomes 'a lifelong learner and realises their potential'. Our SENDco, Mrs Alice Richardson, works closely with the children, parents and staff to help every child achieve and succeed across the curriculum. To contact Mrs Richardson or to request a meeting, please contact the school office on: 01264 889240 or alternatively e-mail us at: adminoffice@grateley.hants.sch.uk

Other Information

Uniform

- Boys - Grey trousers/shorts.
- Girls - Grey skirt/pinafore or grey trousers; summer: Red & white stripe/check dress
- White polo shirt/blouse
- Red school sweatshirt/cardigan with the school logo
- Grey/white ankle socks (summer); Grey or black tights (winter); Black Shoes (no Trainer type shoes)

Only stud earrings may be worn and these will need to be removed for PE / Games.

PE and Games Kit

- Red round neck t-shirt
- Black shorts/ Black tracksuit or jogging bottoms/sweatshirt (winter)
- Trainers
- Water bottle
- Inhalers should be carried by your child if needed when taking part in sports activities. At other times there should be a named inhaler in school.

Healthy Eating

Children are encouraged to bring a water bottle to school and drink water throughout the day. Children are allowed to bring a fruit or vegetable snack to eat at break time. Hot meals are cooked on school premises by the Hampshire County council catering company HSC3 (Access to the HSC3 website and menus can be found on the school website). Children are able to have a choice of school meals, sandwiches, or a combination of the two. School meals can be ordered and paid for, if necessary, by Tucasi Scopay. You will be given a link code by the school and full instructions of how to get started.

Hot school meals are free for children in Years R – 2 and cost £2.60 per meal for Year 3 – 6.

Free School Meals

All children in Key Stage 1 have been entitled to Universal Free School Meals since September 2014.

However, for some of those children, schools will also be able to claim Pupil Premium, which will help provide further support for those children. The criteria for eligibility is the same as, and comes from, the free school meal criteria from Key Stage 2 onwards.

Punctuality

The school day starts at 8:50am and finishes at 3:30pm. The gates are opened at 8:40am to allow parents to drop children off. This reduces the traffic congestion in the village and allows the children to commence the day in such a way as to promote effective learning behaviours. Children who arrive after 8:50am will need to access the school via the front office and will be marked down as late. This will have an effect on a child's

attendance figure; the national expectation for a child's attendance is 96%; the schools expectation is 97%. Further information about attendance can be found on the school website.

Absence and Holidays during Term Time

Absences must be reported to the office by 10am on the first day of absence, and each day thereafter. Following National guidelines and legislation, children are not permitted to take holidays during term time. It is at the Head teacher's discretion to permit a term time absence, but only under exceptional circumstances. More information about absence can be found on the school website.

First Aid and Medicines

Only prescribed medicines can be given in school. Medicines must be in their original, named container. The office holds a form that must be filled in and signed before medicine can be administered. Prescription medicines will be held by the office to be used when required. Inhalers/Epipens may be held in the office/classroom for use as required. There are first aid trained personnel in school to deal with any incidents that may occur. If you would like to speak to the school nurse team regarding your child's health or to visit their website for information please use the following link <http://www.southernhealth.nhs.uk/services/childrens-services/school-nursing/>

We hope that our prospectus has provided you with all of the information that you will need. However, the best way to find out all about our Grateley community is to come and visit us.

We look forward to welcoming you to our school in the near future.

Kind regards,



Mrs R. Dance
(Head Teacher)

Contact Information

Address: Grateley Primary School, Grateley, Andover, Hampshire, SP11 8JS

Telephone: 01264 889240

email: adminoffice@grateley.hants.sch.uk

Website: www.grateley.hants.sch.uk

Head Teacher: Mrs R Dance

Admin Officer: Mrs S. Kitching

Admin Assistant: Mrs S. Davis